



2024 ... 2025

CATALOG OF SERVICES



TABLE OF CONTENTS

5 Leadership Team

6 Letter from the Administrator

6 CESA Governance

7 Introduction

7 Completing Your Service Contract

**8 Informational Technology
Administrative Services**

8 Backup Service (IT1)

8 Network Vulnerability
Assessments

9 Software Support

10 Operations

10 Payroll Services

10 Bookkeeping Assistance

10 Software Transition

10 Delivery Service (01)

12 Learning Services

12 Universal School
Improvement Services (LS1A)

13 Strategic School
Improvement Services (LS1B)

14 On-site Literacy Support (LS1C)

14 Federal Funding Management
Support Membership (LS1D)

15 Equity Systems Support (LS1E)

16 Equitable Multi-Level Systems
of Support (EMLSS) Project

18 College and Career Readiness

18 College and Career
Readiness (CCR1)

20 Youth Apprenticeship

22 Educational Technology

22 Teaching and Learning
with Technology

22 Instructional Media Center (ET5)

23 E-rate Support and Technology
Planning (ET6)

23 Managed Informational
Technology (IT) Services (ET7)

TABLE OF CONTENTS

24	Facilities Management	30	Special Education and Pupil Services
24	Environmental Health and Safety Services	30	Special Education Leadership (SE1A)
24	Environmental Project Consulting	31	New Director/Designee Support (SE1B)
26	Referendum Planning	31	Special Education Administration Fiscal Support (SE2A)
26	Facility Assessments	31	Early Childhood Administration Support (SE2B)
28	Construction Management	31	SBS/Medicaid Support (SE2C)
28	Owner's Representative	32	Program Consultation and Professional Coaching (SE2D)
29	Natural Gas Purchasing	33	Professional Development (SE2E)
29	Focus On Energy	33	Paraeducator.net (SE2F)
		34	School Psychologist (SE3A)
		34	School Psychologist Support Services (SE3B)
		34	Virtual Clerical Services (SE3B(A))
		34	Seeds Software Support (SE3C)
		35	Itinerant Services
		36	Deaf and Hard of Hearing Instructional Services (SE4A)
		36	Educational Interpreter/Communications Aide (SE4B)
		36	Educational Audiology Base Services (SE4C)
		37	Educational Audiology IEP-Related Services (SE4D)
		37	Occupational Therapy (SE4E)
		37	Assistive Technology
		37	Physical Therapy (SE4F)
		38	Overdrive Services (SE4E(A))
		38	Vision-Impaired Services (SE4G)
		39	Orientation and Mobility (SE4G(A))
		39	Mental Health Consultant (SE4H)
		39	In-Direct Personnel
		40	Foster Grandparents (SE6)

LEADERSHIP TEAM



Jordan Sinz

Agency Administrator
jsinz@cesa10.k12.wi.us
715.720.2079



Ashley Hebert

Director of Finance
ahebert@cesa10.k12.wi.us
715.720.2022



Charlie Schneider

Executive Director of
Facilities Management
cschneider@cesa10.k12.wi.us
715.720.2176



Gwen Janke

Director of College &
Career Readiness
gjanke@cesa10.k12.wi.us
715.720.2033



Tonia Anderson Ruskin

Executive Director of Special
Education & Pupil Services
tandersonruskin@cesa10.k12.wi.us
715.720.2053



Sarah Lipke

Director of Educational Technology
slipke@cesa10.k12.wi.us
715.720.2069



Heather Feigum

Director of Facilities Management
hfeigum@cesa10.k12.wi.us
715.720.2122



Connie Wislinsky

Executive Director
of Operations
cwislinsky@cesa10.k12.wi.us
715.720.2078

Letter from the Administrator



In service to our member districts, CESA 10 remains committed to helping everyone involved in our educational system adapt to changing paradigms about instruction, assessment, attendance, and the learning process. I am proud of our dedicated staff, who have adapted their methods to ensure that high-quality professional learning, consultation, and a myriad of supports continue to be valuable for districts in the midst of rapid change. Our agency is focused on providing you with the resources necessary to impact your school district positively.

Please take a moment to review the service options described in this catalog. CESA 10 will tailor services to meet your needs so all students can reach their fullest potential. Services are regularly modified based on the needs identified by districts. Please offer any feedback or suggestions you have related to our programs and services.

Jordan Sinz, CESA 10 Agency Administrator

CESA Governance

CESA 10 is governed by an 11-member Board of Control elected at the annual convention from member school boards. The administrative team works closely with an advisory committee of five superintendents who provide feedback regarding services offered and monthly superintendent meetings.



Members of the committee are:

- **Ryan Bargender**
School District of Abbotsford
- **Michael Johnson**
Eau Claire Area School District
- **Chris Lindner**
School District of Loyal
- **Jeff Rykal**
School District of Mondovi
- **Lori Whelan**
Osseo-Fairchild School District

INTRODUCTION

Completing Your Service Contract

This catalog details the myriad services we provide to help meet the instructional and business goals of your district. Once you decide which services you wish to subscribe to next year, we ask that you follow these steps:

1. Review your district's Summary of Services Estimate sheet. The cost listed indicates our best estimate of what this service will cost your district in 2024-25.
2. Read through the catalog to determine if other CESA services could help you address your school's instructional and business needs.
3. To add a service, write "Add New Service" in the cost column on your Service Summary. CESA will contact you to determine the service fee for your district.
4. If you are uncertain whether you will subscribe to a service next year, please print "Hold" next to the service.
5. After finalizing the list of services you will be using next year and your Board approves this list, sign the Basic Service Contract and return the contract to Leigh McMahan at the CESA 10 office.

NOTE: For Special Education Services:

If you are a member of the special education consortium, a separate contract must also be signed and returned.

For Educational Technology - Teaching and Learning with Technology:

This service provides the coordination and management as defined by the Consortium Agreements and Bylaws for the Distance Learning Networks:

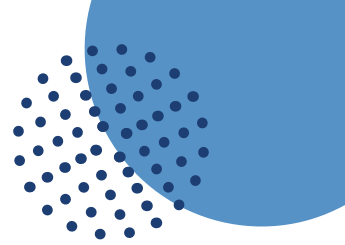
- CADENC (ET1)
- CWETN (ET2)
- Project CIRCUIT (ET3)
- WIN (ET4)

Joining or discontinuing this service is in accordance with the policies, procedures, responsibilities, and decisions established by the Consortium's governing body.

To attract and retain top quality staff, we would like all contracts returned by **Thursday March 28, 2024**. Most importantly, we want to make sure your district uses CESA 10 services that maximize instructional quality and efficient operation.

Thank you for your continued support. Please contact Jordan Sinz if you have any questions.

Informational Technology Administrative Services



BACKUP SERVICE (IT1)

When it comes to Information Technology, three things are guaranteed: computer systems crash, humans error, and IT disasters happen whether we're prepared or not. For all of these reasons, data backups are not just important but absolutely necessary.

This service will allow members to send crucial data backups to an off-site secure storage location. Members can then access, restore, or recover data on their own terms. Utilizing a secure, reliable, redundant connection, members can be confident their district's data backups are available when needed.

NETWORK VULNERABILITY ASSESSMENTS

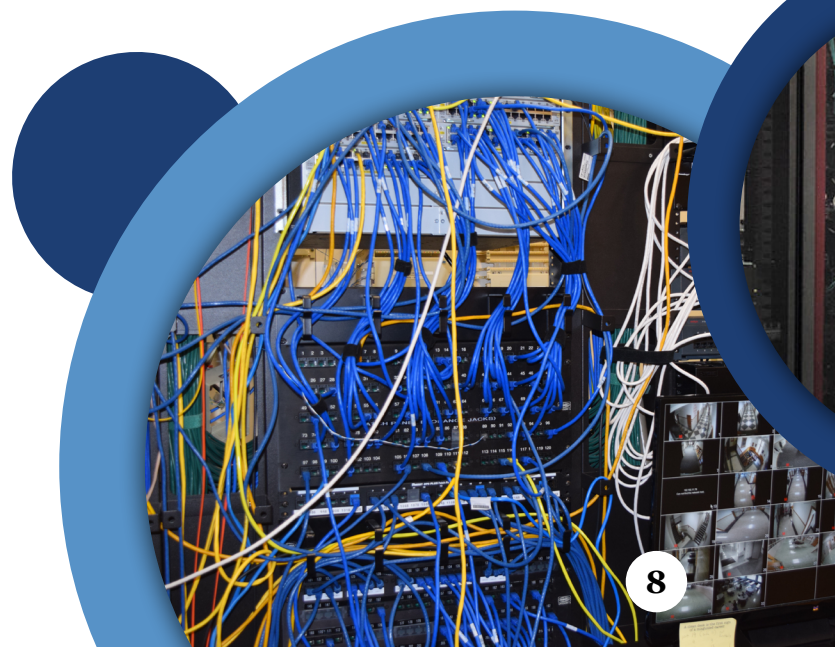
A network vulnerability assessment is a process that helps review and analyze endpoint and network devices for security issues. The assessment may detect network flaws and holes in the network that could leave an opportunity for hackers to exploit.

CESA 10 Information Technology staff will coordinate a date and time to perform a scan on your network, either internally, externally, or both.

When that scan is completed, CESA 10 IT staff will compile the results for review with your district technology personnel. CESA 10 IT staff will also provide remediation suggestions based on those results.



[Return to Table of Contents](#)



SOFTWARE SUPPORT (INFINITE CAMPUS, SKYWARD)

CESA 10, along with CESAs 5 and 7, comprise the Wisconsin Regional Computing Center (WiRCC). The WiRCC was created in 1968 to provide cost-effective data processing for schools. Currently, the staff at each of the WiRCC locations provides software support and consulting for Skyward and Infinite Campus.

The WiRCC partnership ensures that all customers, regardless of location, are provided the highest quality user support. Consultants in the partner-CESA locations communicate daily to support customer needs, track effectiveness, and ensure that all customers are served effectively and efficiently. Learn More:

<https://www.cesa5.org/software/wircc.cfm>

NOTE: Schools are billed directly by CESA 5, the fiscal agent for this service.



PROGRAM CONTACTS



Jordan Sinz
Agency Administrator
jsinz@cesa10.k12.wi.us
715.720.2079



Matt Van Beek
Information Technology
Project Lead
mvanbeek@cesa10.k12.wi.us
715.720.2073



Operations

BUSINESS OFFICE SERVICES

Members of the CESA 10 Operations Department are ready to assist your District with your business office needs. These services are District specific and could include assisting with both short-term and long-term business office vacancies due to staff on leave or position needs, training new personnel, and reviewing existing processes for improved efficiencies. Our team has experience with both alio and Skyward. Contact Connie Wislinsky for a customized proposal to meet your needs.

Payroll Services:

- Time sheet entry, new employee set up, run payroll, process tax payments and W2 preparation
- Quarterly and annual reporting requirements

Bookkeeping Assistance:

- Assistance in reconciling balance sheet accounts, including cash and payroll liabilities
- Assistance in preparing for year-end audit

Software Transition:

- Assist District in converting from alio to Skyward Qmlativ
- Join Skyward Qmlativ migration planning meetings
- Guidance with alio data clean up and migration "homework"

DELIVERY SERVICE (01)

Weekly delivery service that allows Districts to easily send and receive instructional materials, communications, shared media, equipment and much more. District may send items to/from CESA 10 and any other participating District using this service.

Fee For This Service: \$1,875/district

PROGRAM CONTACT



Connie Wislinsky

Executive Director
of Operations

cwislinsky@cesa10.k12.wi.us

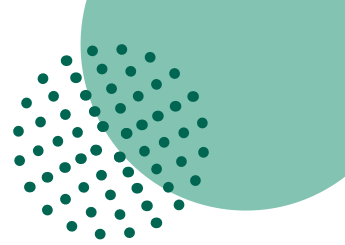
715.720.2078

[Return to Table of Contents](#)





Learning Services



OBJECTIVE

Learning Services is a team dedicated to supporting our customers in growing expert learners. In addition to our grant funded opportunities for school districts, this service opens the door for unlimited learning around school improvement of systems, instructional practices, assessment data, policy review and supporting the fine details of managing federal funds. Each of our four services: School Improvement Services, Literacy Systems, CORE, and Federal Funding Management provide districts a cost effective means of providing the highest level of service to support organizations in functioning equitably and smoothly.

All Learning Services services are allowable under most federal funding sources.

Our Learning Services team is here to support your district goals to allow you more time with your school community. Our services are tailored to meet your district identified needs, and support you in moving your district in achieving growth.

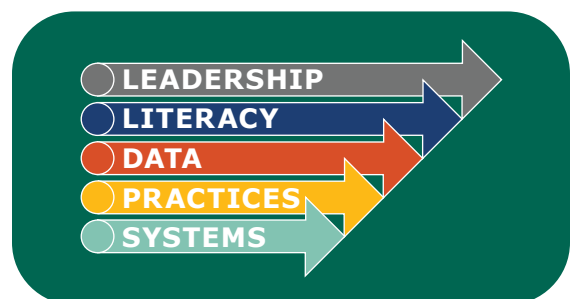
UNIVERSAL SCHOOL IMPROVEMENT SERVICES (LS1A)

Participation for all your employees for ALL School Improvement Services workshops at CESA 10 at no additional cost.

Our team will present any of the School Improvement Services offerings in your district if you have 10 or more participants.

Access to our on demand professional learning allows you to access learning in a time and place that works best for you. Our services are tailored to meet your district identified needs, and support you in moving your district in achieving growth.

- One National Presenter offering for all staff (past guests: Anthony Muhammad, Paul Gorski, Luiz Cruz, Joe Feldman, Myron Dueck)
- English Learner Programming workshops
- DAC Guidance
- Starlab and/or astronomy resources
- Substitute Teacher Training
- Assessment programming including Standards-based Grading
- Materials adoption support
- High-Quality Instructional Materials Adoption/Implementation
- Continuous Improvement Planning workshops
- Content Workshops and Networks
- Instructional Coaches connections
- Gifted and Talented Systems
- Licensing support
- Remediation/Intervention series
- Behavior management/PBIS
- Content Collaborative Team Support: Current offerings Mathematics, Social Studies, Art, Music, Science, World Languages
- Data Dig Workshops
- Accountability training including report card support
- Mentor training
- Professional Learning opportunities added throughout the year based on annual district needs assessment



Learning Services

STRATEGIC SCHOOL IMPROVEMENT SERVICES (LS1B)

Available to districts who purchase LS1A

Strategic School Improvement Services team supports district leadership teams with creating systems around their identified needs. Strategic support builds on the learning offered in our universal by adding on-site workshops and coaching to carry learning forward to actualizing cultural shifts and student growth. Our focus areas are organized under 4 focus areas to better serve you.

LEADERSHIP

DESIGNED FOR...	WHAT WE COULD DO TO HELP YOUR TEAM
SUPERINTENDENTS, PRINCIPALS, and INSTRUCTIONAL LEADERS	<ul style="list-style-type: none"> • EE (Educator Effectiveness) • Build Capacity with Instructional Leaders • Strategic Improvement Plans CORE Training on Equity Leadership • Title III: Understanding Law & Requirements

LITERACY

DESIGNED FOR...	WHAT WE COULD DO TO HELP YOUR TEAM
SUPERINTENDENTS, PRINCIPALS, and INSTRUCTIONAL LEADERS	<ul style="list-style-type: none"> • Build Capacity with Instructional Leaders • On-site coaching around literacy implementation • Material adoption support • Intervention trainings • Strategic Improvement Plans • Early literacy audit

DATA

DESIGNED FOR...	WHAT WE COULD DO TO HELP YOUR TEAM
SUPERINTENDENTS, PRINCIPALS, SCHOOL PSYCHOLOGISTS, and INSTRUCTIONAL LEADERS	<ul style="list-style-type: none"> • EE (Educator Effectiveness) • Build Capacity with Instructional Leaders • Strategic Improvement Plans CORE Training on Equity Leadership • Title III: Understanding Law & Requirements

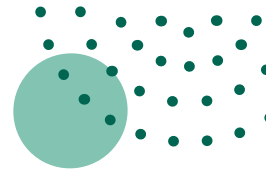
PRACTICES

DESIGNED FOR...	WHAT WE COULD DO TO HELP YOUR TEAM
TEACHERS, INSTRUCTIONAL SUPPORT STAFF, and LEADERS	<ul style="list-style-type: none"> • Coaching/Mentoring • Lesson Modeling • Professional Development Connected to Best Practices • UDL • CORE: Behavior Training and Boosters • Schoolwide Title I Core Instruction and Interventions • Curriculum, Instruction, & Assessment • Supporting the process for dual credit application including agriculture/science connections

SYSTEMS

DESIGNED FOR...	WHAT WE COULD DO TO HELP YOUR TEAM
LEADERSHIP TEAMS: Superintendents, Principals, Curriculum Directors, Reading Specialists, SpEd Directors, School Psychologists	<ul style="list-style-type: none"> • PLC • High Resiliency Schools • EMLSS (RTI Structures) • CORE: Equity Policies and Audits • Title I School Plans • Title III: Systems to Support Programming • EE (Educator Effectiveness) • Responsive Classroom

Learning Services



ON-SITE LITERACY SUPPORT (LS1C)

Available to current members of our School Improvement Services Strategic Level of Support and our CESA 10 Federal Funding agreement.

District Benefits:

- In district support for literacy training that aligns with Act 20.
- In district coaching tied to the model of comprehensive literacy selected by district.
- In-district service provided by a licensed reading specialist.
- Implementation of a multi-year plan Includes additional, personalized, on-site time.
- Assisting with the creation of a professional development plan connected to the specific reading materials selected by the district.
- Providing support to principals and administrative teams in their role as instructional leaders and evaluators of instructional programs.

Universal School Improvement (LS1A, B,C) and Strategic School Improvement Services (LS1B) have a three year option. Contact Jordan Sinz for more information.

FEDERAL FUNDING MANAGEMENT SUPPORT MEMBERSHIP (LS1D)

This membership allows us to continue to support districts with service to support our agreements with Title I, II, IV, and V. The membership is not required for our CESA 10 consortium supporting Title III. There is an additional fee the first time you join this service, to allow for the on-boarding process to provide support for compliance and monitoring.

CESA 10 provides administrative support for the federal funding provided through the Every Student Succeeds Act. Our team works with your district to ensure you have current information and the most effective practices in place to provide support for district instructional leaders. Our ESSA team works to both support and advocate for you at the state level. Our Budgets and Grants specialist supports your district with creating allowable budgets for your districts allocation. Specific support is indicated in the specific Title agreements based on the requirements of the various sections of the law.

Title Agreements are shared with district administrators in the spring. Agreements are all inclusive with Title I, Title II, Title IV, and Title V. A separate Title III consortium agreement is also shared.

District Benefits:

- In-district site visits to align budgets to support programming in alignment with guidance
- ESSA planning meetings
- Support of virtual folders that house the narratives and background for compliance and audit
- Manage Federal ESSA claims
- Facilitate combined private and public school collaborative consultations
- On-site comprehensive needs assessment with data
- Revise and adjust budgets needed per request of district personnel prior to expenditures
- Assistance and support with private school equitable participation
- Technical Assistance and support with ESSA programming
- Technical Assistance and support with application process and timelines

*Should you choose to discontinue our federal funding service and subsequently re-engage within a three-year time frame, a fee will be applied to account for the supplementary efforts required to bring your data to current status.



Learning Services

EQUITY SYSTEMS SUPPORT (LS1E)

Equity in systems can only be achieved by understanding that systems are designed to achieve the results they get, meaning inequitable outcomes are not the result of an individual teacher or practice, but the result of the system as a whole. A focus on equity in systems requires attending to the dynamics of difference at play within that system, the role that identity plays, the history of the system, how staff collaborate with each other (norms, policies, teaming, climate, culture, power), how staff deliver services, practices utilized, and how data is used with stakeholder voice for continuous improvement. These factors work together to dictate outcomes and must be addressed in a comprehensive manner. Learn more here: <https://core.cesa10.org>.

CORE staff will:

1. Collaboratively identify organizational needs related to systems equity.
2. Develop and deliver comprehensive and systems-focused professional development related to essential equity concepts (including policy review).
3. Employ coaching strategies to ensure application of equity concepts.
4. Facilitate systemic change to support equity for all organizational stakeholders and ensure natural organizational structures sustain the work.

Customer Benefits:

The term "equity" has increasingly come to the forefront of organizational conversations and conflicts in recent years, leaving many leaders and stakeholders searching for guidance and support. At this critical time in our nation's history, the need for systems to work efficiently,

effectively, and equitably is greater than ever. CORE services provide systemic supports related to equity through individualized action plans tied to a continuous improvement process. CORE consultants are committed to introducing equity work in an actionable way, or connecting previous equity work to actionable steps.

Additional benefits can include specific content and support related to:

- Disproportionate Outcomes
- History of Marginalization
- Impact of Bias
- Policy Review
- Systems Audit
- Practitioner & Client Identity
- Practitioner Tools & Strategies
- Community & Family Ownership
- Leadership: Support & Accountability
- School Report Card Data

Our team will present CORE service offerings on location for 10 or more participants.

Fee for this service:

A range of service packages exist including multi-year intensive and individualized support from CORE staff. Contact Jordan Sinz for more information.



Learning Services

EQUITABLE MULTI-LEVEL SYSTEMS OF SUPPORT (EMLSS) PROJECT

CESA 10 Equity Support team offers support for creating Equitable multilevel systems of support (EMLSS). Learn more here: [Wisconsin's Framework for Equitable Multi-Level Systems of Supports | Wisconsin Department of Public Instruction](#)

Our CESA 10 Equity team, supports schools and community organizations in reviewing, building and implementing systems for equity with our personalized support lead by our CORE team but as a service separate from the CORE Equity Service.

The EMLSS Project replaces the Wisconsin RtI Center as of July 1, 2023. The services are grant funded by IDEA through Wisconsin DPI and focus on helping schools improve their outcomes for all students with focus on students with disabilities and eliminating race as a predictor of disability status. The EMLSS framework includes addressing systems and structures to ensure the provision of equitable services, practices and resources to each and every learner.

The project will provide low- or no-cost in person, hybrid and virtual professional learning, coaching and technical assistance for schools and districts related to Wisconsin's EMLSS Framework, to build knowledge, skills and dispositions leading to improved outcomes for students.

PROGRAM CONTACT



Jordan Sinz
Agency Administrator
jsinz@cesa10.k12.wi.us
715.720.2079





Table Talk

At your table...

- Introduce yourself & what district you are from
- Choose one to answer:
 - What is your organization or society best known for?
 - What is the best piece of advice you have been given?
 - What is the best part of fall for you?



Table Talk

At your table...

- Introduce yourself & what district you are from
- Choose one to answer:
 - What is your organization or society best known for?
 - What is the best piece of advice you have been given?
 - What is the best part of fall for you?



College And Career Readiness



COLLEGE AND CAREER READINESS (CCR1)

College and Career Readiness provides support, training, coaching, and leadership across several areas including STEM, Career and Technical Education (CTE) and workforce and business connections. The areas of CTE, ACP, and STEM are changing rapidly, including the importance of integrating new and innovative technologies into PK-12 classrooms. To meet these changes head-on, CESA 10 has hired excellent, experienced staff to create a road map for schools into these exciting opportunities. Services include career readiness learning opportunities for students, parents, employers and other community partners. All professional development opportunities can be personalized and offered on-site at districts, including presentations to School Boards.

DISTRICT BENEFITS

Academic and Career Planning (ACP):

- Additional implementation strategies beyond grant deliverables
- Customized Redefining Ready assistance
- Personalized support to implement strategies providing student with vital career-based learning experiences
- Assist to promote community stakeholder

Career and Technical Education (CTE):

- Provide district leadership and guidance to identify CTE program goals, including analysis of CTE programs and develop a process to implement goals
- Provide assistance to CTE teachers and staff to review curriculum and integrate opportunities for students to earn industry-recognized credentials
- Provide assistance applying for the CTE Technical Incentive Grant and use of funding to strengthen quality CTE programming
- Provide district CTE teachers mentoring opportunities and assistance to promote and strengthen local Career and Technical Education Student Organization (CTSO) opportunities

PK-12 STEM Consultant:

College and Career Readiness recognizes that all students need opportunities to engage with complex, real-world problems to develop career mindsets from the youngest grades through graduation. STEM students use design thinking combined with appropriate technology to solve problems and develop deeper learning. Skills such as persistence, teamwork, and the application of gained knowledge to new situations are fostered by STEM education. These are in-demand skills that prepare all students for success in any endeavor. Our PK-12 STEM consultant can assist in developing and enhancing STEM learning opportunities that work within your content and across grade levels.



[Return to Table of Contents](#)

College And Career Readiness

Professional Development Opportunities:

- Mentorship for individuals or teams interested in developing impactful classroom practices
- STEM curricula such as Project Lead the Way (PLTW)
- Creative uses of technology — video creation, podcasting, robotics, maker-spaces, engineering
- Project-based learning planning and implementation
- Integration of STEM principles across the curriculum, PK-12
- STEM competitions and coaching support
- Strategic Computer Science for All (CSforALL) Resource & Implementation Planning Tool (SCRIPT)

Student Engagement Opportunities:

- Engineering Machine Design Contest (grades 5-12)
- Hour of Code event planning and support
- After-school and summer STEM programming assistance

STEM Materials:

Our STEM kits come with technical guides and lesson plans, and on-site demonstrations in your classroom, upon request.

- Physical computing kits and robotics (Sphero, VEX)
- Media creation (Video, Stop Motion, Podcasting)
- Low-tech or No-tech engineering and construction challenges (KEVA, cardboard construction)
- STEM Energy kits (wind, solar, electrical circuit projects)

Please visit our College & Career Readiness website, ccr.cesa10.org/pk12-stem for more information regarding services provided by your CESA 10 STEM Consultant.

Business & Industry Partnership Consultant:

Our Business & Industry Partnership services connect CESA 10 staff and students with high-quality, engaging learning experiences in collaboration with our region's top employers and community partners. Connecting our K-12 students with career learning opportunities helps reinforce passion and confidence in their academic and career journey and helps grow, strengthen and diversify our regional workforce.

- Assist districts in arranging work-based and career-based learning activities including career guest speakers, business panels, mock interviews, job shadows and business and industry tours
- Assist to strengthen business and industry capacity to support K-12 education initiatives through one-on-one business support
- Assist to bridge the gap between industry and education by gathering relevant workforce and employability data from business partners and work to incorporate those findings into student education
- Develop resources for districts to use, including labor market information, recorded career pathway business panels, student education materials and more

Professional Learning Opportunities:

- Career Pathways for Students & Families
- Work-based Learning and Youth Apprenticeship Opportunities for Students & Families
- Work-based Learning and Youth Apprenticeship for Businesses
- Embedding Employability Skills in All Content Areas

Visit our College & Career Readiness website, ccr.cesa10.org/business-industry-partnerships for more information.

College And Career Readiness

YOUTH APPRENTICESHIP

Chippewa Valley Youth Apprenticeship, administered by CESA 10 via a DWD grant, works with school districts in the greater Chippewa Valley to link students with on-the-job experiences in a way that benefits students, districts, and community businesses. Additionally, as a Chippewa Valley Youth Apprenticeship consortium member, you will have exclusive access to curriculum developed by CESA 10 that can be utilized as related YA instruction and access to our Student Internships & YA Opportunities Job Board on our CVYA.CESA10.org website.

Student Benefits:

- Paid work experience
- Opportunity to explore interest in a career area and increase future employability
- State-issued skills certificate
- Higher education credits

District Benefits:

- Funding provided for each student registered for Youth Apprenticeship and additional funding of up to \$1,000 per student completing the YA program (through the CTE Incentive Grant)
- Real-world work experience for students
- Community linkages that gain support for the district

Business/Employer Opportunities:

- Recruit and screen potential employees
- Improve the skill level of future workers
- Reduce employee turnover by hiring program graduates
- Chance to become involved with worksite curriculum
- Partner with local schools to prepare students for their future

PROGRAM CONTACT



Gwen Janke

Director of College & Career Readiness

gjanke@cesa10.k12.wi.us
715.720.2033



SINCE 1991
YOUTH APPRENTICESHIP
WISCONSIN



CESA 10 Educators Rising regional student organization at the state conference.



Educational Technology

TEACHING AND LEARNING WITH TECHNOLOGY

The Teaching and Learning with Technology Service is customizable to meet your district initiatives surrounding teaching and learning with technology.

This service provides the coordination and management as defined by the Consortium Agreements and Bylaws for the Distance Learning Networks:

- CADENC (ET1)
- CWETN (ET2)
- Project CIRCUIT (ET3)
- WIN (ET4)

Joining or discontinuing this service is in accordance with the policies, procedures, responsibilities, and decisions established by the Consortium's governing body.

The Distance Learning network is wide and well established through decades of work and dozens of connections. Public and private school districts, universities, technical colleges, and other institutions are brought together to connect students and teachers across our region. The service provides opportunities beyond what is possible within your own school. Using technology, this opportunity removes geographic isolation and disadvantage. Distance Learning also creates educational, social, and cultural proximity where geographically it may not exist.

The team at CESA 10 brings a variety of specialties and experiences to provide a rich level of broad services to our districts. In-district professional development and instructional coaching are tailored to provide expertise and support for all K-12 teachers. The same tools and resources utilized to connect multiple districts can be applied to an individual district's need to reach their own students on or off-site.

District Benefits:

- Distance Learning high school-to-high school and higher education courses
- Live streaming classroom activities and school events, as well as athletics
- Distance Learning management and support
- In-district support and educational technology coaching for all PK-12 teachers
- Professional networks

INSTRUCTIONAL MEDIA CENTER (ET5)

This service provides collaborative support for media specialists through in-district consulting and professional development. Curricular resources that meet state standards, support current educational initiatives, and respond to the curricular and professional development needs of all teachers are made available for users.

District Benefits:

- The CESA 10 IMC provides access to educational resources that are too costly to purchase or used infrequently. High quality, professional support is available for implementing and integrating the resources.
- Online resources are also available 24/7 and can be accessed both in and out of school. They provide teachers and students with instant and engaging content on endless topics for all grade levels.
- Additional in-district library media specialist support is available for member districts and can include support for: library media curriculum development, collection development, and library planning and policies. Contact the department director for additional information.
- Special Education funding can be used to support this service.

Educational Technology

E-RATE SUPPORT AND TECHNOLOGY PLANNING (ET6)

The federal E-Rate program provides schools with supplemental funding for the cost associated with internet access and internal network connections. Leveraging the E-Rate program to its fullest can help ensure that your long-term technology plans are feasible and fiscally sustainable.

The E-Rate program is a year-round process that requires multiple form applications and deadlines associated with those forms. CESA 10 can ensure compliance with the program requirements and help to maximize the funds available to your district.

We can help at all stages of the E-Rate process, including comprehensive technology assessments of your existing infrastructure and the development of a long-term technology plan.

District Benefits:

- On-site infrastructure and technology assessment
- Comprehensive assistance and support for your district's federal E-Rate application and other applicable federal funding opportunities
- Guidance for compliance with all E-Rate requirements and regulations
- Support for securing state and other technology funds
- Guidance for long-term technology planning based on E-Rate funding cycles

MANAGED INFORMATION TECHNOLOGY (IT) SERVICES (ET7)

CESA 10 combines strong IT knowledge with firsthand experience in supporting schools to deliver comprehensive and robust Managed IT Services. Our expert technology staff is

[Return to Table of Contents](#)

well-versed in information and educational technology and the needs that go along with it. Our goal is to provide the IT support and oversight that your district needs in a cost-effective manner while providing exceptional customer service.

This service can be customized and scaled to fit your district's IT needs, including the following:

- 24/7 network monitoring
- Network administration and oversight
- Backup system administration and oversight
- Disaster recovery planning
- Diagnostics remote and on-site as needed
- Updates/patch installation for server and network infrastructure
- Firewall management
- Server life cycle tracking/planning
- Network infrastructure life cycle tracking/planning
- Guidance for long-term technology planning based on E-Rate funding cycles

PROGRAM CONTACT



Sarah Lipke

Director of Educational Technology
slipke@cesa10.k12.wi.us
715.720.2069

Facilities Management

OBJECTIVE

CESA 10 has been involved in providing facility-related services to schools and municipalities since the mid-1990s. Our Facilities Management Department strives to provide safe, healthy, energy efficient, comfortable, and resource-conscious environments through shared knowledge, linkage to resources, and sustainable actions.

Decades of experience and expertise managing institutional facility needs complement CESA 10's unique position as a nonprofit educational service agency. In the last five years, more than 200 districts have utilized CESA 10 for their facility needs.

ENVIRONMENTAL HEALTH AND SAFETY SERVICES

CESA 10's Environmental Health and Safety (EHS) Service provides cost-effective safety solutions while maintaining compliance with local, state, and federal regulatory agencies. Our team of experienced consultants serves more than 25% of the school districts in the state.

District Benefits:

- Periodic site visits
- Annual safety walk through
- Complimentary asbestos trainings
- Review of DSPPS Regulatory Inspections
- Planning implementation of district programs
- Fume hood testing

ENVIRONMENTAL PROJECT CONSULTING

Unlike many construction companies, CESA 10 is a fully-insured environmental company with certified professionals in Lead Hazard Inspection, Asbestos Supervision, Inspections, and Management Planning.

We Specialize In:

- Chemical Inventory Management
- Lead Paint and Water Testing
- School Radon Testing
- Mock OSHA Audits
- Asbestos Sampling
- Indoor Air Quality Testing
- Review of environmental hazards (asbestos, lead, mold)
- Project budgeting and scheduling
- Pre-construction or Renovation Environmental Assessments

PROGRAM CONTACT



Lance Gregorich

Project Management and EHS Manager

lgregorich@cesa10.k12.wi.us
715.720.2046



Facilities Management

REFERENDUM PLANNING

CESA 10's award-winning referendum service takes a multi-faceted approach to referendum planning. Facility Managers first review the district's strategic goals to determine their needs. Project Managers then perform a comprehensive facility audit to identify deferred maintenance needs, cost estimates, and provide solutions to ongoing challenges. Environmental experts consult during this step to ensure code compliance and proper contingencies are in place. Business Analysts research past referendum results and review community demographics and Marketing Specialists create a customized campaign package that focuses on school branding and messaging. The entire process is transparent so the district, Board of Education, and community understands the identified needs and the importance of fulfilling them.

Quick Facts:

- CESA 10 has won many state and national awards for school referendum campaigns!
- The referendum planning team boasts a perfect 100% success rate for districts and municipalities within CESA 10!

FACILITY ASSESSMENTS

Facility studies are a specialty of CESA 10 Facilities Management. Hundreds of customers have benefited from our investment grade audits, flexible prioritization matrices, and long-range planning. A facility assessment is often the catalyst to increase the safety, security, and efficiency of your buildings.

In addition to our all-encompassing facility assessments, CESA 10 also offers customized studies in the following areas:

- Roofing
- Space Utilization and Cost Analysis
- Tech Ed and Other Shop Areas
- Playgrounds
- Mock OSHA
- Food Services Studies
- HVAC Troubleshooting and Optimization
- Fund 46

The Facilities Management department's team of engineers, Indoor Air Quality Professionals, School Risk Managers, Energy Managers, and Asbestos Management Planners, among many others, boast hundreds of years of cumulative experience specializing in school facilities.

"Thank you so much for your hard work, preparation, planning, and guidance with this referendum. I truly believe we would not have been successful if not for you and your team."

Lynne Bauer, Financial Manager/Treasurer, City of Chippewa Falls

WS2:RA

wisconsin school
public relations
association

Wisconsin's professional
association for strategic
communications



Facilities Management

CONSTRUCTION MANAGEMENT

CESA 10 will serve as your construction manager from project identification and bidder selection, to subcontractor management and ensuring proper closeout. Our experienced team will act in your district's best interest to ensure the project stays on schedule and within budget.

CESA 10 also offers Construction Management as Agent, a service where the district holds the contractor and supplier contracts. This service allows CESA 10 to assist in a full-service way while avoiding additional bond costs.

Whether you want ultimate control over your budget or would rather have CESA 10 take the reins, this service allows our professional Project Managers to operate as the decision-maker on your behalf for a turnkey, yet fully transparent, project.

OWNER'S REPRESENTATIVE

Through our Owner's Representative service we act as your advocate and advisor through the review of contracts, design documents, change orders, bids, work completion, and quality. This unbiased, third-party review will be valuable during the design, installation, and ongoing operation of your equipment. Construction companies use confusing contracts and hidden fees. Utilize CESA 10's Owner's Representative service to work solely for the district and cut through all the clutter.

PROGRAM CONTACT



Luke Schultz

Associate Director of
Facilities Management
lschultz@cesa10.k12.wi.us
715.720.2167

"Working with other companies on past projects, I felt like I was getting \$0.40 on the dollar.
With CESA 10, I feel like I'm getting more than my dollars worth!"

Andy Grimm - District Administrator, School District of Winter

[Return to Table of Contents](#)



Facilities Management

NATURAL GAS PURCHASING

The Natural Gas Purchasing Program was created in 1996 at the request of a school district. CESA 10 partners with a reputable natural gas marketing company to offer districts a sheltered budget through locked-in rates. Today, more than 28 school buildings in 14 districts take advantage of this lucrative service.

CESA 10 holds a periodic meeting on the history and goals of the program, including who is a good candidate, what a natural gas futures contract looks like, and the predicted future of the market. Districts are only able to join the Natural Gas Purchasing Program during a small window of time.

FOCUS ON ENERGY®

FOCUS ON ENERGY® is Wisconsin's statewide program for energy efficiency and renewable energy. The program provides technical expertise and financial assistance to complete projects that otherwise would not be completed or help them happen sooner than scheduled.

District Benefits:

- There is no cost for Focus on Energy services. Eligibility depends on your district being served by a participating utility.
- Financial incentives are available for lighting, HVAC, process systems, and kitchen and refrigeration equipment.
- Focus on Energy gave more than \$5 million to Wisconsin schools and government entities in 2023.

If your District is considering upgrading equipment or building renovations, contact Focus on Energy today to find out how they can help pay for energy-efficient system upgrades. Call 800.762.7077 or visit www.focusonenergy.com for more information.



PROGRAM CONTACT



Heather Feigum

Director of Facilities Management

hfeigum@cesa10.k12.wi.us

715.720.2122

Special Education and Pupil Services

OBJECTIVE

The CESA 10 Special Education and Pupil Services Department assists school districts in providing appropriate educational services to students with IEPs, in accordance with the Federal Individuals with Disabilities Education Act (IDEA). Our Pupil Services staff contribute to the quality of learning experiences offered in participating districts and work collaboratively to support student academic, social-emotional, and behavioral success.

The Department is dedicated to support participating districts in the development, implementation and evaluation of quality programs and services for students with disabilities. Guidance is provided to all districts for meeting the requirements of state and federal special education laws and regulations and coordinating the budgeting and management of special education funds and grants. The Department also provides and supervises licensed staff, itinerant services and district leadership.

The CESA 10 Department of Special Education and Pupil Services has been rated by area School Superintendents to be both highly responsive to meeting their needs (85.7%) and at a very high level of overall satisfaction with service delivery (85.8%).

Quick Facts:

- Professional Development events provided both in person and virtually for Special Education directors, educators, therapists, School Psychologists, and Speech/Language Pathologists.
- Over 60 highly qualified and licensed staff provide quality services to CESA 10 school districts.
- Offer over 30 types of services that are customized to meet your special education and pupil service needs.
- \$952,872.87 in School Based Services funds captured and returned to participating school districts in 2022-2023, an over 12% increase from the previous year.
- District Flow Thru Grant claiming support, \$2,582,332
- Applied for \$1,033,909.46 in High Cost Claims and received \$303,440 in revenue, a 29% rate of return for districts participating in special education admin/fiscal support services.
- Assisted districts in serving 3,745 students with Individual Education Plans
- Provides staff to 16 Wisconsin counties, offering early intervention Birth to Three Services
- Implements two Department of Justice Grants, which provide paid, state-wide training to teachers and other school staff on trauma research awareness in order to make our school safe and supportive for all.

SPECIAL EDUCATION LEADERSHIP (SE1A)

CESA 10 staff is licensed and experienced in recruiting, interviewing, hiring and evaluating special education staff. We provide leadership proficient in law, researched-based educational practices, parent rights, functional assessments, behavior strategies and plans, manifestation



[Return to Table of Contents](#)

Special Education and Pupil Services

and expulsion hearings. Additionally our leaders are adept at fiscal management of special education funds, spending requirements and limitations. We will guide your district in the efficient and effective application of special education funds. CESA 10 has proven experience across multiple districts with special educators, saving district resources and administrator time. Get access to the best leaders who participate in continuous, current professional development and updates through CESA 10. We will also provide leaders the opportunities for director networking via Regional Special Education Network (RSN) and fiscal support for latest trends and requirements for special education funds. Save time and money today by using Special Education Director Leadership.

NEW DIRECTOR/DESIGNEE SUPPORT (SE1B)

New Director Support provides responsive real life mentoring and practical help for new directors. We are on call with tools, resources and strategies for budgets, evaluation, IEP and legal compliance knowledge. Ensure the success of a newly hired staff while and mitigate budget errors, inadequate IEPs, parent complaints and due process hearings.

CESA 10 provides expert personalized support for each director/designee far beyond what is available through issue specific phone contact with DPI, via mentoring and coaching.

SPECIAL EDUCATION ADMINISTRATION FISCAL SUPPORT (SE2A)

Special Education Fiscal Support provides assistance for administrators and bookkeepers with reporting requirements for IDEA, budget development, filing of claims and assurances, categorical

aid, Maintenance of Effort (MOE), and equitable services calculations. CESA 10's fiscal experts provide guidance to maximize the effective utilization of district special education dollars. This service may be covered using IDEA grant funds.

EARLY CHILDHOOD ADMINISTRATION SUPPORT (SE2B)

Early Childhood Administration Support assists districts with maximizing fiscal resources while monitoring compliance with grant dollars. This service provides technical assistance and support to district early childhood educators, speech/language pathologists and office personnel. Support is focused on DPI required results and coding reporting ensuring accuracy and timeliness in district submissions. For your convenience, technical assistance is available face-to-face, via phone, and electronically.

CESA 10 has extensive experience troubleshooting with multiple districts. Our expertise on both the required content and methods associated with the multiple reports required by the WDPI will ensure accuracy and compliance for your district.

SBS/MEDICAID SUPPORT (SE2C)

SBS/Medicaid Support service provides high quality comprehensive management of all facets of capturing SBS/Medicaid dollars for districts. Technical assistance, support and vendor coordination is provided. In-district training is provided for staff, with individual support when needed as well as quarterly submission of financials. Resources, materials and strategies are provided to increase and maintain efficient and accurate documentation of eligible services provided to districts.

Special Education and Pupil Services

The high priority focus and close oversight of this service ensure that your district both claims and receives every allowable dollar. Ongoing communication with both the vendor and governmental agencies improves procedures and ensures expert service. Our quarterly reviews and enhancements provide resources, strategies and training practices. Our staff maintain active efforts to build staff awareness and motivation to participate with the goal of increasing dollars for districts every year.

PROGRAM CONSULTATION & PROFESSIONAL COACHING (SE2D)

CESA 10 can provide coaching and in-district program support to teachers and other staff as they implement new practices with fidelity. Through the coaching conversation, staff engages in reflective practice and ongoing on-site professional learning to positively impact student outcomes.

Coaching new, emergency licensed and any special education staff working to achieve their best around the implementation of best practices following professional development including:

- Achievement Testing
- Early Childhood (Curriculum, Instruction, Assessment, and Child development)
- Challenging Behavior/Development of Functional Behavior Assessment (FBA) and Behavior Intervention Plans (BIP)
- Classroom Management
- College and Career Ready Individual Education Program (CCR-IEP Beliefs/Steps/Facilitation/LEA)
- Inclusive practices that promote equitable access for all

Coaching around the implementation systems level work with leadership teams, including:

- Continuous Improvement Planning
- Creating Collaborative Planning Teams
- District Leadership Teams (communication protocols, effective meeting protocols, fidelity assessment data)
- District Capacity Assessments for taking on new effective innovations
- Creating and Improving District coaching/mentoring plans/systems

CESA 10 offers support to students who display **behavior that is challenging** to their teachers, families and school districts. Coaching and professional learning for staff around the Rage to Reason Model by Amy Buie, Neurosequential Model for Education by Bruce Perry, and Pyramid Model for Early Childhood from the National Center for Pyramid Model Innovations, as well as consultation and support with Functional Behavior Assessments.

Services May Include:

- IEP team participation/facilitation
- Observation and completion of Functional Behavior Assessment (FBA) and Behavior Intervention Plans (BIP)
- Professional learning opportunities for effective, proven strategies to use when working with students with behavior that is challenging in areas such as:
 - » Understanding the function of a child's behavior
 - » Proactive planning and effective response strategies for students with emotional/behavioral disabilities
 - » Evidence-Based Practices
 - » Self Regulation and Regulations Strategies
 - » Functional Behavioral Assessment and Behavior Intervention Plan development and follow up

Special Education and Pupil Services

- » Coaching and follow up for staff
- » Customized services based on specific student and district need

PROFESSIONAL DEVELOPMENT (SE2E)

This service provides professional development offerings and networking opportunities for special educators, paraeducators and special education leaders covering state and federal educational initiatives and current trends in special education.

CESA 10 provides a comprehensive menu of offerings tailored to the needs of special educators at free or reduced cost access for participating district staff. Our cooperative method gives us the ability to bring in presenters and specialized trainings beyond individual district budgets. We utilize various learning methods and platforms to increase district staff access.

District Benefits:

- Networking for Speech and Language Pathologists and Nonviolent Crisis Intervention (CPI) Training provided with this service!
- **NEW:** 30 minute coaching session included following any Professional development to support the implementation of best practices in your school
- Educator and Paraeducator access to engaging and collaborative professional development opportunities
- Access to specific professional development tailored to your staff

PARAEDUCATOR.NET (SE2F)

Participation in this service gives a district subscription access to providing an online option for paraeducators to obtain "Highly Qualified" certification as required by State and Federal guidelines, as well as participating in ongoing professional development to improve job performance. A district can utilize a standardized protocol of required courses and assessments or develop an individualized listing for each paraeducator.

Software support includes participant enrollment, data management, technical assistance and progress monitoring, available to participants and district administrative staff. Certificates are issued upon the successful completion of "Highly Qualified" requirements.

District Benefits:

- Provides a method for paraeducators to meet "Highly Qualified" status if they lack the required two years of technical college or a four-year college degree.
- Provides a comprehensive program of skills and expertise to enhance paraeducator job performance and effectiveness.
- Can be individualized to address specific skills areas for development or improvement.
- Can be utilized to support a paraeducator's Specific Learning Objective (SLO).
- Maintains a record of the paraeducator's completed courses and assessments, as well as their competency scores.

Fee For These Services:

- Cost is based on subscription cost divided among the number of user districts' ADM.
- Fees range from \$30-\$200
- Can be funded through IDEA funds

Special Education and Pupil Services

SCHOOL PSYCHOLOGIST (SE3A)

Allow CESA 10 to do the recruiting, hiring, retention and evaluation of highly qualified and fully licensed school psychologists to save your district time and cost.

CESA 10 provides the opportunity for districts to access the exact amount of school psychology services needed, while sharing costs and avoiding the time commitment of recruitment and hiring activities, and evaluation headaches.

District Benefits:

- Evaluation of students referred for possible disabilities
- Expert coordination of due process procedures through the referral process
- Participation in IEP teams including written documentation of IEP decisions
- Assist in collecting, coordinating, interpreting, and utilizing medication information to meet the educational and psychosocial needs of students who have IEPs or are referred for evaluation
- Psychological expertise available for individual or group counseling, IDEA legal compliance, teacher consultations, and parent conferences

SCHOOL PSYCHOLOGIST SUPPORT SERVICES (SE3B)

CESA 10's School Psychologist Support provides comprehensive professional development opportunities and supervision for school psychologists. We offer access to a library of current assessment materials and test protocols and support for computerized scoring. Professional networking with individual and group support is also included.

Ongoing current professional development supported with networking specific to the profession provides expert staff and cost savings to districts as materials and test purchases are shared. Psychologists benefit from responsive interaction with supervisors regarding challenging cases and procedural issues. Network sharing also improves professional performance and staff satisfaction. Protect and support your valuable staff by accessing this service today.

Fee For These Services:

- Cost is based on districts' ADM.
- Can be funded through IDEA funds

VIRTUAL CLERICAL SERVICES (SE3B(A))

Virtual Clerical Services provide support for IEP software forms, documentation, record keeping and filing. This program saves valuable psychologist time for evaluation, observation, and other student-based activities. It also helps to keep districts IEP-compliant, without the need for hiring additional in-district secretarial staff.

SEEDS SOFTWARE SUPPORT (SE3C)

Districts choosing SEEDS4Schools® for their Special Education data processing will continue to receive a high level of support in the areas of technical assistance; database administration/support, and enhancement/refresher trainings throughout the school year.

Special Education and Pupil Services

SEEDS4Schools® User Support:

- Provide trainings for new administration/ directors, therapy providers, and teachers
- Provide trainings on form updates, system updates, and refreshers as requested
- Provide basic-level troubleshooting for user profiles, data input, formatting, activation, and inactivation of students
- Provide basic WISEdata assistance
- Represent districts at quarterly council meetings including an annual forms review
- Provide annual caseload rollover assistance as well as ongoing caseload/ enrollment updates throughout the year
- Maintain all CESA-provided itinerant staff enrollments

SEEDS4Schools® is a web-based application available to authorized users with any Internet-connected device. Its purpose is to support the generation of forms and collection of information required in the IEP and related processes as well as customized reports, School-Based Services reimbursement, and school district billing. Software membership fees for continuing SEEDS partners are based on a formula using a flat database fee and enrollment calculations.

****SEEDS4Schools® software will be billed separately via CESA 6.****

- SEEDS compiles data for state and federal reports, referral statistics, and monitoring the progress of evaluations
- SEEDS includes validations to assist with self-assessment
- SEEDS permits Special Education staff to develop standardized IEPs and related forms fully compliant with DPI
- SEEDS includes accommodations for all state and local testing/assessments

[Return to Table of Contents](#)

ITINERANT SERVICES

Itinerant Services through CESA 10 are developed to assist rural districts as they serve students with disabilities. Available services include instructional services and supports from specially trained and licensed educators for students with significant hard of hearing and vision and loss. In the itinerant service provider model, CESA 10 Teachers of the Deaf and Hard of Hearing, Teachers of Students with Visual Impairments and Orientation and Mobility Specialists work in partnership with a district's special education professional and support staff to meet the needs of students. Educational interpreters are also available to work directly with hard of hearing students who require that assistance.

CESA 10 employs occupational and physical therapists, a school nurse, and educational audiologists to provide the related services required in student IEPs and to support both regular and special educators in their work with students with disabilities. Direct student services, assistance with assessment, specialized equipment, assistive technology, device testing, implementation and follow-up, as well as teacher training and support are provided. This service delivery model provides support to students in natural environments to increase access and opportunity as well as provides quality, cost-effective services to students and staff in member districts. We will continue to evaluate and add itinerant services as needs arise in our member districts.



Special Education and Pupil Services

DEAF AND HARD OF HEARING INSTRUCTIONAL SERVICES (SE4A)

In this service, assessment and instructional services are provided by a licensed educator of the Deaf and Hard of Hearing. Teachers of the Deaf and Hard of Hearing coordinate services in partnership with a local special education teacher/case manager. Itinerant instruction, educational consultation, and resource information are provided. Instructional support may include pre-teaching, re-teaching, reinforcement of classroom information, or supplanting a class. This service enables districts to provide mandated special education to low incidence students through a purchased service, at an efficient cost, matched to each individual student's needs. We eliminate the need for individual districts to seek and hire Deaf and Hard of Hearing specialist, who are limited in number.

District Benefits:

- Provides consultation, materials and techniques to general and special education teachers who serve students with hard of hearing
- Provides instructional services to support the IEP of students with hard of hearing

EDUCATIONAL INTERPRETER/ COMMUNICATIONS AIDE (SE4B)

CESA 10's Educational Interpreter/Aide service provides certified/trained staff who facilitate communication for deaf students. This increases opportunities for students to participate in a school environment. Services are based on specific student needs and may be paid for using IDEA funds.

CESA 10 recruits, hires and trains qualified staff to be assigned to districts based on your individual students' needs. We provide time and cost savings to districts, as well as flexibility as student needs and enrollments change.

EDUCATIONAL AUDIOLOGY BASE SERVICES (SE4C)

This service provides diagnostic hearing evaluations for any student previously screened by district staff whose results are questionable, or difficult-to-test, and in need of further testing to conclude hearing status is adequate to access spoken instruction in the learning environment. Professional suggestions for medical attention is advised for those that indicate hearing loss is present. Additionally, our educational audiology team serves as a resource for questions and guidance to district hearing screening programs.

Our team works with districts to support students and educators with appropriate Classroom Audio Distribution System (CADS) to increase auditory access of spoken instruction for all students as well as decrease teachers' efforts put forth to project spoken communication in class, saving the voice qualities of educators and reducing absenteeism due to vocal strain. Classroom acoustics support is available to determine needs for adequate auditory access for all learners, support with selection, ordering, set up assistance and troubleshooting in conjunction with the assigned in-district point of contact is available. Options are also available to educate staff and students on the effects of loud noise exposure and the importance of hearing protective devices (HPD) in those loud environments.

CESA 10 employs doctoral level licensed educational audiologists who, on an itinerant basis, visit schools. Such specialized professionals are difficult to recruit and retain.

Special Education and Pupil Services

EDUCATIONAL AUDIOLOGY IEP-RELATED SERVICES (SE4D)

This service provides individualized support for student specific auditory needs in the learning environment. This includes audiology assessments of hearing and listening to assist in determining eligibility for Special Education services. Educational audiologists are an IEP team member representing the audiological impact and offering appropriate considerations for accommodations. If appropriate as determined by the IEP team, Hearing Assistive Technology (HAT) is required to be fit by a licensed audiologist. Fitting, in-servicing teachers and the student, and supporting daily use of HAT are included. Periodic cleanings/performance checks of personal hearing aids, fitting and maintaining recommended direct-fit Hearing Assistive Technology (HAT) systems and other assistive devices fall under this category. Earmold impressions of students may be completed as determined on an individual basis as part of the HAT system fitting. Our team is able to assist families, as needed and feasible, in transporting personal hearing aids or earmold impressions to the clinical audiologist for expedited turnaround of working devices to support auditory access in the learning environment.

*CESA 10 Audiology IEP service includes access to and fitting of direct-fit Hearing Assistive Technology (HAT) for eligible Special Education Hard of Hearing students to increase auditory access of spoken instruction and communication in school.

Additionally, our educational audiologists are connected with area clinical audiologists to serve as a communication link between medical and educational professionals regarding student information on hearing status, medical treatment plans, and/or amplification fittings/programming/modifications/loss or repair reports. Finally, otoacoustic emissions (OAE) screenings are offered to Early Childhood Special Education (EC-SE) students and those Special Education populations unable to be screened by the district using traditional behavioral testing. Educational Audiology Base Services (SE4C) must be purchased in order to access this service (SE4D).

OCCUPATIONAL THERAPY (SE4E), ASSISTIVE TECHNOLOGY, PHYSICAL THERAPY (SE4F)

CESA 10 Occupational Therapists provide specialized designed intervention methods to assist students with self-care and classroom activities. Education, consultation and support to family members working on student IEP goals are also provided. Therapists work to support IEP goals that are developed in the context of the school environment, across educational settings, using grade level academic and functional expectations. They also facilitate crucial communication between medical and community-based providers regarding students with educational and developmental needs. Assistive Technology Services are available as needed.



Special Education and Pupil Services

CESA 10 Physical Therapists provide specialized strategies to enhance a student's positioning and mobility in the school environment. Recommendations are provided for equipment to assist students in the classroom and provide mobility in school, seeking to obtain full participation in classroom activities for students with IEPs. Therapists work to support IEP goals that are developed in the context of the school environment, across educational settings, using grade level academic and functional expectations. Services help to ensure students can fully benefit from the special education services required by the IEP.

CESA 10 recruits, hires and retains quality occupational and physical therapists and supports them in an itinerant service provider model. This allows districts to receive excellent service for lower costs, provided in the school setting. For all eligible services, CESA 10 therapists document and submit information for allowable SBS/Medicaid billing and return funds to districts to offset service costs. Services may also be funded with IDEA dollars.

OVERDRIVE SERVICES (SE4E(A))

This online service provides audio books to allow full access to additional curriculum materials (novels, etc...) for special education populations in grades 3-12. There is an initial charge for setup, and then an annual fee based on usage and size of district.

CESA 10 guarantees no waiting period if the material requested is available in audio format. Once CESA 10 purchases the material, the books stay in our library and available materials continue to grow for all parties. We provide easy and quick access, usually within two hours. Technical support is also provided to students and teachers as part of the service.

VISION-IMPAIRED SERVICES (SE4G)

CESA 10 Teachers for the Blind & Visually Impaired provide assessment and instruction to students who have a visual impairment that affects their educational performance. Instruction may include Braille, use of adaptive equipment and assistive technology, computer and typing skills, skills of daily living, use of low vision aids and other skills that are included in the Expanded Core Curriculum for Students with Visual Impairments.

- Adapts materials for students with visual impairments including, tactile drawings, Braille and large print, and orders textbooks in Braille and large print.
- Conducts functional vision assessment to determine how the students with visual impairments functionally use their vision to perform classroom tasks.
- Consults with teachers, parents and school staff, regarding the student's needs and the accommodations that are necessary for the student to participate in his or her educational settings.
- Provide training and resources to school staff and parents regarding adaptive equipment, and teaching techniques specific for students with a visual impairment.
- Provides information to teachers, parents, and school staff about the impact of a vision loss on classroom learning.
- Interprets information obtained in eye reports and consults with optometrists and ophthalmologists to clarify medical information.
- Participates in Individual Education Planning (IEP) meetings for students with visual impairments and assists the educational team in program placement decisions.

Special Education and Pupil Services

ORIENTATION AND MOBILITY (SE4G(A))

CESA 10 Orientation & Mobility Specialists provide assessment and instruction to individuals with visual impairments in the use of their remaining senses to maintain orientation and travel safely in all environments. Instruction may include the use of long cane, concept and motor development, sensory development, human guide techniques, street crossing and route planning, use of public transportation and travel within a variety of communities. An O&M Specialist also consults with and provides training to school staff and families of students with visual impairments as to how they can help encourage independent travel skills and make the student more independent at school, in the community, and in the home environment. CESA 10 recruits quality Teachers of the Blind and Visually Impaired and Orientation and Mobility Specialists. Working cooperatively, local districts have access to excellent services from hard to find specialty staff to meet the unique needs of students.

MENTAL HEALTH CONSULTANT (SE4H)

This service provides consultation and training to district administrators, student service staff, and educators on topics related to mental health from a master's level Licensed Professional Counselor or equivalent mental health professional. Services include consultation in implementing district programming to address universal concerns, support in talking with community professionals to create more unified services and access to care, and formal or informal trainings for staff and community members to increase mental health literacy (i.e.

Mental Health First Aid, QPR, or school specific related concern). The Mental Health Consultant can also provide consultation and conceptualization services about individual students in both crisis and non-crisis situations. These consults can lead to assistance in classroom coaching, conversations with guardians, or other support professionals.

IN-DIRECT PERSONNEL

Allow CESA 10 to recruit, hire, retain and evaluate quality school-based staff to serve in districts in hard to fill positions including: Early Childhood Special Educators, Speech/Language Pathologists, Special Education Paraprofessionals, and School Social Workers.

- Early Childhood Special Education Teacher (SE5A)
- Speech-Language Pathologist (SE5B)
- Special Education Paraprofessional (SE5C)
- Social Worker (SE5D)

CESA 10 recruits and hires qualified staff to be assigned to your district based on your individual students' needs. Using CESA 10 staff saves time and resources!



Special Education and Pupil Services

FOSTER GRANDPARENTS (SE6)

The CESA 10 Foster Grandparent Program (FGP) pairs Foster Grandparents with students to serve as role models, mentors, tutors, and friends. Foster Grandparents are income qualified adults who are at least 55 years old. They work in classrooms during the school day under the direction of teachers on tasks such as reading, practicing math facts, and spelling words.

Due to the efforts of the CESA 10 Foster Grandparent Coordinator, and support by CESA 10 districts, this program has continued despite recent changes in state methods of funding. This program has been honored as a Daily Point of Light recipient for being an exemplary model for inter-generational relationships.

Foster Grandparents:

- Develop relationships with the students and other adults in the school.
- Offer comfort and love, setting a child on the path toward a successful future.
- Work individually with students to meet their needs one-on-one.
- Share experiences, wisdom and compassion.
- Earn a small stipend and a transportation reimbursement if income qualified.
- Serve a minimum of 15 hours/week.
- Are provided pre-service and in-service training as well as insurance and often a school meal while serving.

The Foster Grandparent Program is sponsored by The Corporation for National and Community Service, Wisconsin Department of Health Services and locally by CESA 10.

[Return to Table of Contents](#)

PROGRAM CONTACT



Tonia Anderson Ruskin

Executive Director of Special Education & Pupil Services

tandersonruskin@cesa10.k12.wi.us

715.720.2053





CONTACT US



Website

www.cesa10.k12.wi.us



In-Person

725 W Park Ave, Chippewa Falls, WI 54729



YouTube

CESA 10



Facebook

CESA 10



LinkedIn

CESA 10



C·E·S·A¹⁰

Cooperative Educational Service Agency